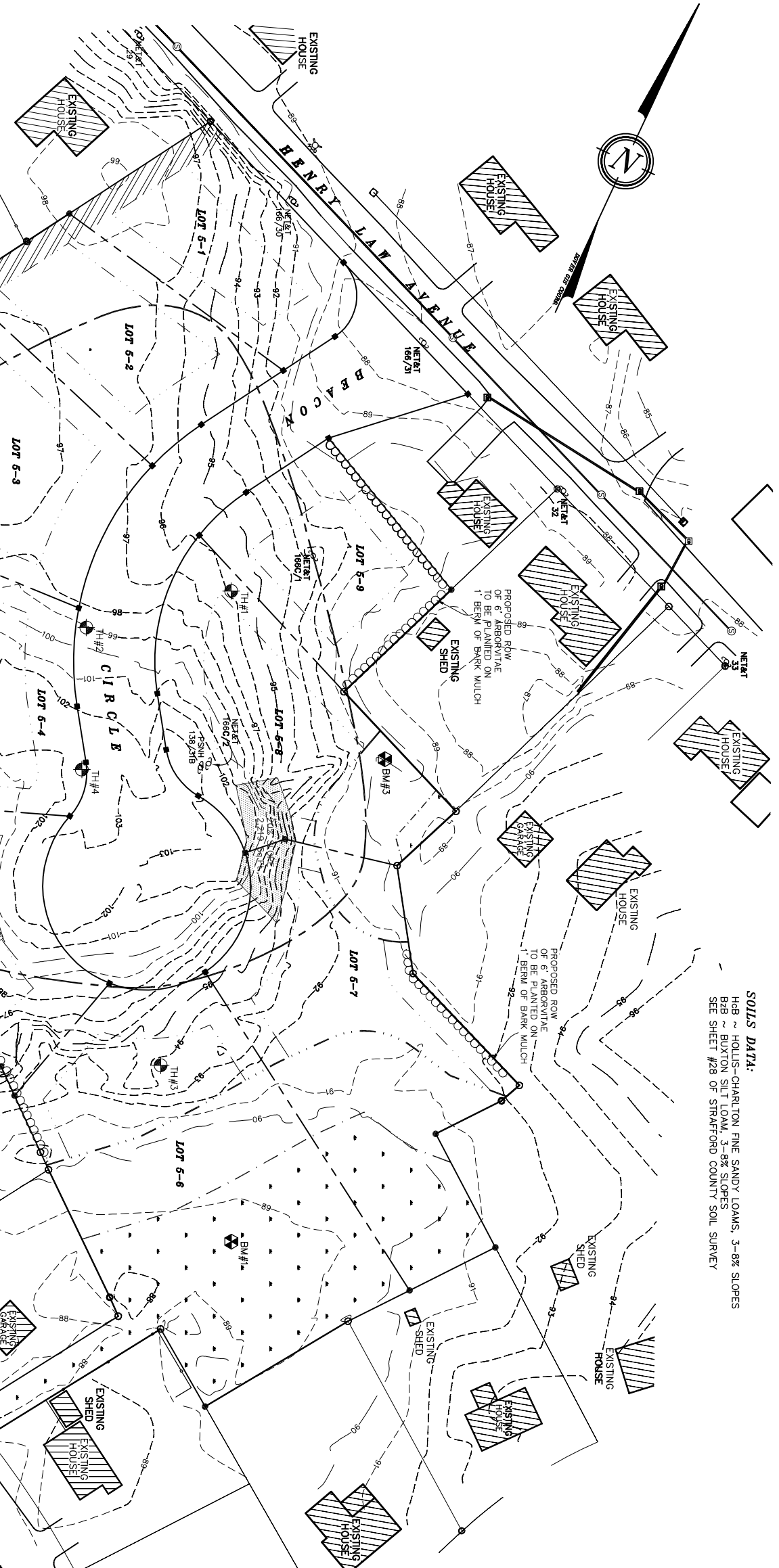


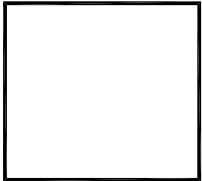
**SOILS DATA:**  
 H8B ~ HOLLIS-CHARLTON FINE SANDY LOAMS, 3-8% SLOPES  
 B2B ~ BUXTON SILT LOAM, 3-8% SLOPES  
 SEE SHEET #28 OF STRAFFORD COUNTY SOIL SURVEY

**NOTES:**  
 1.) OWNER: KPRP/165 HENRY LAW AVENUE, LLC.  
 28 MEADOW LANE  
 ROCHESTER, NH 03867  
 2.) TAX MAP 21, LOT 5  
 3.) LOT AREA: 194,401 Sq.Ft., 4.46 Ac.  
 4.) S.C.R.D. BOOK 3606, PAGE 257  
 5.) ZONING: R-12  
 MINIMUM LOT SIZE: 12,000 SQ.FT.  
 MINIMUM FRONTAGE: 100  
 MINIMUM SETBACKS:  
 FRONT ~ 50  
 SIDE & REAR ~ 15'  
 MAXIMUM LOT COVERAGE: 30%  
 6.) I HEREBY CERTIFY THAT, TO THE BEST OF MY KNOWLEDGE AND BELIEF, THIS PARCELS DOES NOT FALL WITHIN THE FLOOD PLAIN FLOOD ZONE REF: FEMA COMMUNITY #330145, MAP # - 33017003300, DATED: MAY 17, 2005.  
 7.) VERTICAL DATUM BASED ON APPROXIMATE USGS ELEVATIONS.



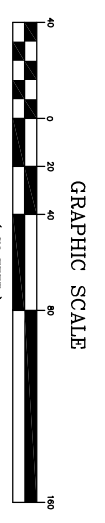
- LEGEND:**
- CONCRETE BOUND(FND)
  - IRON PIPE(FND)
  - T-BAR STEEL STAKE(FND)
  - ⊕ REBAR(FND)
  - ⊕ 4 CONCRETE POST(FND)
  - ⊕ RAILROAD SPIKE(FND)
  - ⊕ DRILL BIT(FND)
  - ⊕ UTILITY POLE
  - PROPOSED BOUNDARY LINE
  - BUILDING SETBACK LINE
  - EDGE OF JURISDICTIONAL WETLANDS
  - 50' BUFFER LINE TO WETLANDS
  - APPROX. MCS SOL BOUNDARY
  - EXISTING MODI STOCKADE FENCE
  - EXISTING CHAIN LINK FENCE

**WETLAND NOTE:**  
 JURISDICTIONAL WETLANDS WERE DELINEATED BY MARG JACOBS, CERTIFIED WETLAND SCIENTIST NUMBER 090, ACCORDING TO THE STANDARDS OF THE US ARMY CORPS OF ENGINEERS - WETLANDS DELINEATION MANUAL, TECHNICAL REPORT Y-87-1, JANUARY 1987. (ENVIRONMENTAL LABORATORY, 1987; US ARMY ENGINEERS WATERWAYS DEPARTMENT OF ENVIRONMENTAL SERVICES-WETLANDS BUREAU, PREDOMINANT HYDRIC SOILS WERE IDENTIFIED UTILIZING THE FIELD INDICATORS FOR IDENTIFYING HYDRIC SOILS IN NEW ENGLAND, VERSION 3, APRIL 2004. (NEW ENGLAND AND HYDRIC SOILS TECHNICAL COMMITTEE, 2004, 3RD ED. FIELD INDICATORS FOR IDENTIFYING HYDRIC SOILS IN NEW ENGLAND. NEW ENGLAND INTERSTATE WATER POLLUTION CONTROL COMMISSION, LOWELL, MA) THE INDICATOR STATUS OF HYDROPHYTIC VEGETATION WAS DETERMINED ACCORDING TO THE NATIONAL LIST OF PLANT SPECIES THAT OCCUR IN WETLANDS: NORTHEAST REGION, U.S. FISH AND WILDLIFE SERVICE (MAY 1989). COPIES OF THE SITE PLAN DEPICTING THE WETLAND DELINEATION WHICH HAVE BEEN REVIEWED BY THE WETLAND SCIENTIST ARE INDIVIDUALLY STAMPED & SIGNED.



**BENCHMARK DATA:**  
 BM#1 ~ SPIKE IN TRIPLE MAPLE TREE  
 APPROX. USGS ELEV. = 88.96  
 BM#2 ~ SPIKE IN 30" SPRUCE TREE  
 APPROX. USGS ELEV. = 97.13  
 BM#3 ~ SPIKE IN 20" WHITE PINE TREE  
 APPROX. USGS ELEV. = 91.23

TESTHOLE #	DEPTH	SOIL DESCRIPTION	PERC RATE
TESTHOLE #1	2-21-08	10R 3/2, VERY DARK GRAYISH BROWN, FINE SANDY LOAM, GRANULAR, FRIABLE, FEW FINE ROOTS	4.0'
TESTHOLE #2	2-21-08	10R 3/2, VERY DARK GRAYISH BROWN, FINE SANDY LOAM, GRANULAR, FRIABLE, FEW FINE ROOTS	4.0'
TESTHOLE #3	2-21-08	10R 3/2, VERY DARK GRAYISH BROWN, FINE SANDY LOAM, GRANULAR, FRIABLE, FEW FINE ROOTS	4.0'
TESTHOLE #4	2-21-08	10R 5/6, YELLOWISH BROWN, FINE SANDY LOAM, PLATY, FIRM, FEW FINE ROOTS	4.0'
TESTHOLE #5	2-21-08	10R 5/6, YELLOWISH BROWN, FINE SANDY LOAM, PLATY, FIRM, FEW FINE ROOTS	4.0'
TESTHOLE #6	2-21-08	10R 5/6, YELLOWISH BROWN, FINE SANDY LOAM, PLATY, FIRM, FEW FINE ROOTS	4.0'
TESTHOLE #7	2-21-08	10R 5/6, YELLOWISH BROWN, FINE SANDY LOAM, PLATY, FIRM, FEW FINE ROOTS	4.0'
TESTHOLE #8	2-21-08	10R 5/6, YELLOWISH BROWN, FINE SANDY LOAM, PLATY, FIRM, FEW FINE ROOTS	4.0'
TESTHOLE #9	2-21-08	10R 5/6, YELLOWISH BROWN, FINE SANDY LOAM, PLATY, FIRM, FEW FINE ROOTS	4.0'
TESTHOLE #10	2-21-08	10R 5/6, YELLOWISH BROWN, FINE SANDY LOAM, PLATY, FIRM, FEW FINE ROOTS	4.0'
TESTHOLE #11	2-21-08	10R 5/6, YELLOWISH BROWN, FINE SANDY LOAM, PLATY, FIRM, FEW FINE ROOTS	4.0'
TESTHOLE #12	2-21-08	10R 5/6, YELLOWISH BROWN, FINE SANDY LOAM, PLATY, FIRM, FEW FINE ROOTS	4.0'
TESTHOLE #13	2-21-08	10R 5/6, YELLOWISH BROWN, FINE SANDY LOAM, PLATY, FIRM, FEW FINE ROOTS	4.0'
TESTHOLE #14	2-21-08	10R 5/6, YELLOWISH BROWN, FINE SANDY LOAM, PLATY, FIRM, FEW FINE ROOTS	4.0'
TESTHOLE #15	2-21-08	10R 5/6, YELLOWISH BROWN, FINE SANDY LOAM, PLATY, FIRM, FEW FINE ROOTS	4.0'
TESTHOLE #16	2-21-08	10R 5/6, YELLOWISH BROWN, FINE SANDY LOAM, PLATY, FIRM, FEW FINE ROOTS	4.0'
TESTHOLE #17	2-21-08	10R 5/6, YELLOWISH BROWN, FINE SANDY LOAM, PLATY, FIRM, FEW FINE ROOTS	4.0'
TESTHOLE #18	2-21-08	10R 5/6, YELLOWISH BROWN, FINE SANDY LOAM, PLATY, FIRM, FEW FINE ROOTS	4.0'
TESTHOLE #19	2-21-08	10R 5/6, YELLOWISH BROWN, FINE SANDY LOAM, PLATY, FIRM, FEW FINE ROOTS	4.0'
TESTHOLE #20	2-21-08	10R 5/6, YELLOWISH BROWN, FINE SANDY LOAM, PLATY, FIRM, FEW FINE ROOTS	4.0'



**TOPOGRAPHY**

#1	REVISION	DATE	PER TRC	DESCRIPTION
1	8-12-08			

SUBDIVISION PLAN  
 LAND OF  
 KPRP 165 HENRY LAW AVE LLC  
 165 HENRY LAW AVENUE  
 DOVER, N.H.  
**TAX MAP 21, LOT 5**

**BERRY SURVEYING & ENGINEERING**  
 148 SECOND CROWN POINT RD.  
 BARRINGTON, N.H. 332-2863  
 SCALE : 1 IN. EQUALS 40 FT.  
 DATE : MAY 27, 2008  
 FILE NO. : DB 2007 - 168