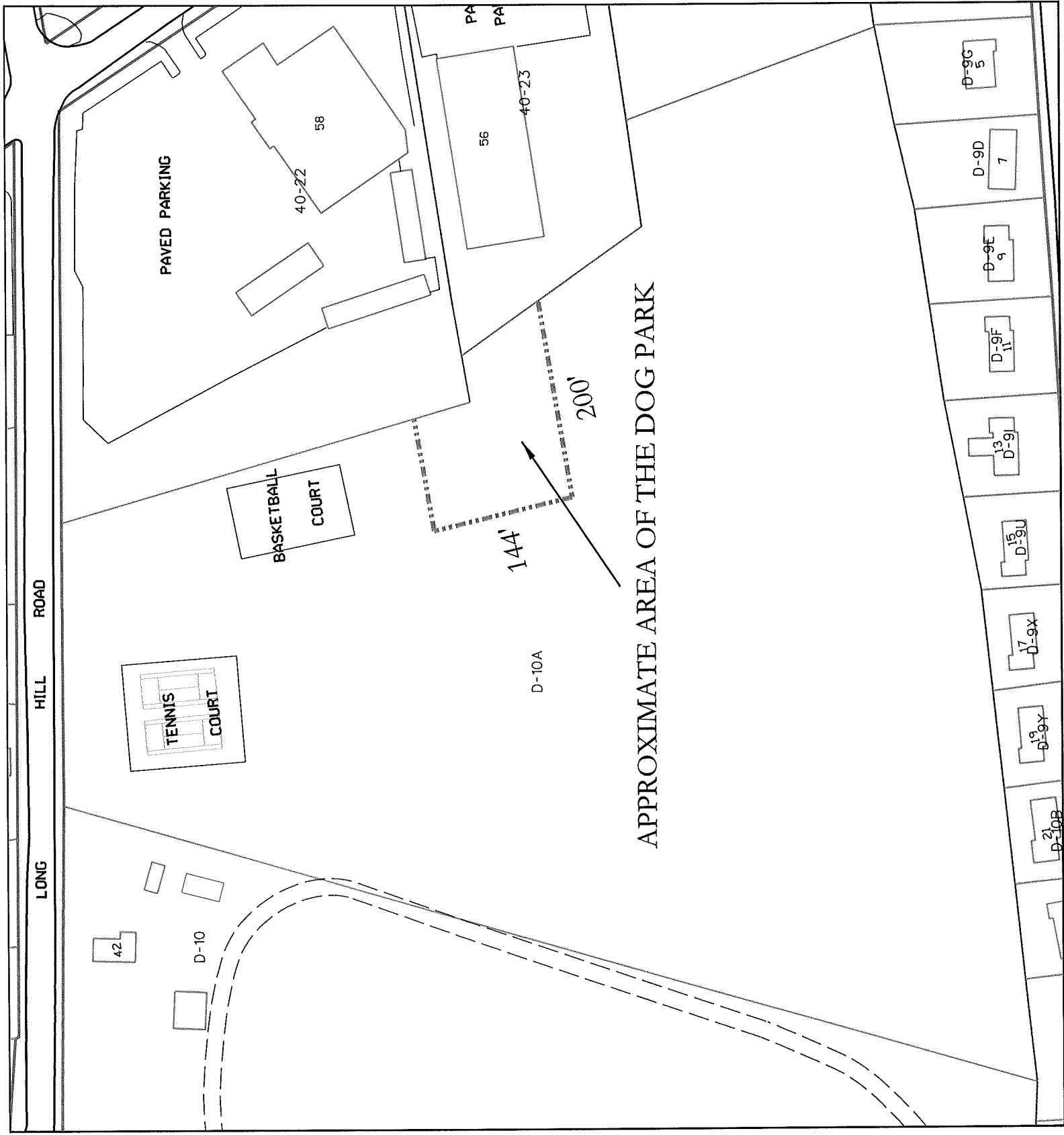


DOG PARK SUGGESTED GUIDELINES

- **The fencing should be of adequate height and design to prevent dogs from escaping the off leash area**
- **There should be adequate parking within a reasonable distance**
- **There should be a transition area inside a closed gate so the dogs will not escape as others enter**
- **Signage with all of the dog park rules and local ordinances posted**
- **Users should be advised that use is at their own risk**
- **The number of dogs per person should be limited**
- **The minimum age of park users should be established**
- **Every dog must wear a collar**
- **Every owner must possess a leash to walk the dog to and from the parking lot**
- **Every dog must display its license and any vaccination tags**
- **No dog shall be left unattended by its owner**
- **Dogs must remain on leash at all times once outside the fenced in area**
- **All dog owners must clean up after their dog and dispose of it in the appropriate container**
- **Park hours of operation must be observed**
- **Contact number and address for comments and complaints should be posted**



APPROXIMATE AREA OF THE DOG PARK

10/29/2009

Press Release

For Immediate Release

City of Dover announces Long Hill Memorial Park Neighborhood Meeting

The City of Dover is pleased to announce a neighborhood meeting, **Saturday November 14, 2009 at 9 am** for the Long Hill Park neighborhood. The meeting will take place at **Long Hill Memorial Park**, weather permitting.

According to the letter sent to residents in the neighborhood, Director of Planning Christopher Parker and Recreation Director Gary Bannon are organizing this meeting to discuss the creation of a dog park at Long Hill Memorial Park. This discussion stems from the recently completed Recreation Master Plan. Based upon recommendations contained within the Plan, the City is looking to establish a dog park within Long Hill Memorial Park.

The Master Plan sites Long Hill Memorial Park as a community based park, open to more than its surrounding neighborhood. The plan also points to survey data and interviews conducted by citizen committee which oversaw the development of the plan to support the need for a dog park.

Residents and the public are invited to attend the meeting at the park on Saturday November 14, 2009 at 9 am. The goal of the meeting is to begin a dialog regarding the creations of the park within the existing park. Planning Director Christopher Parker confirmed that the amenity will be created within the existing confines of Long Hill Memorial Park, "we have identified an area adjacent to the basketball court that is ideal for the dog park. This area is away from residential abutters, is partially wooded and is easily accessible for the public."

According to Recreation Director Gary Bannon variety is important to the project. "We didn't just want to fence in an open area, we want to create a fun environment for dogs and their owners. We will have a wooded area, as well as an open area. There will be shade for users. Also we are looking at having a separate area for smaller dogs." There is a water service line on the property as well, so water will be available to dogs.

For Further information, contact:

Christopher Parker, AICP, Director of Planning and Community Development
202 S.

10/29/2009

Press Release

For Immediate Release

The dog park will add to the existing park, which includes a basketball court, playground, two tennis courts, and a large multi-purpose field. Recently, the City Council passed an ordinance banning dogs from athletic fields, and play areas, so staff felt that an alternative was needed to be provided. "Looking at the data in the appendix to the Master Plan, and based upon residents who have asked about it, it appears we have a need for a dog park in Dover," stated Director Parker. Both Parker and Bannon noted that Portsmouth and Rochester have dog parks.

The park will be constructed using fees paid by developers who have created projects in the nearby area. These projects contributed funds to be used to enhance Long Hill Memorial Park. Additionally, volunteers have approached the City about providing services, such as clearing brush and ground cover to lessen the cost to construct the park.

Should the weather not cooperate, an indoor site to relocate will be made available, and signs will be posted at the park directing participants to it. The Planning Director stressed that this meeting is open to all, and encourages all to attend this meeting. Long Hill Memorial Park is located on Long Hill Road, behind Middleton Building Supply.

For more information regarding the Long Hill Memorial Park Neighborhood meeting please contact the City of Dover Planning Department at 516-6008.

###

For Further information, contact:

Christopher Parker, AICP, Director of Planning and Community Development
200 S. 516-6008



- Home
- Dog Park
- Event Calendar
- Supporters
- Join us
- History

creating
fostering &
promoting
responsible
pet ownership

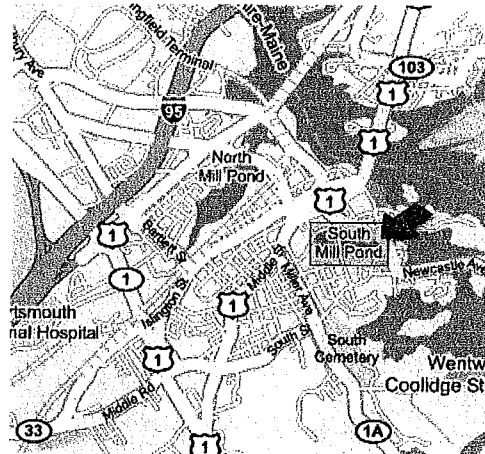
DOG FRIENDLY DESTINATIONS

The Dog Owners Group of the Seacoast believes that it is important for dogs to socialize and play in a safe environment. That's why we think it's important to maintain open areas on the Seacoast where dogs can just be dogs, while encouraging responsible pet ownership.

Portsmouth Dog Park

The Portsmouth Dog Park is located near downtown between South Mill Pond and the public tennis courts, in an area known as the South Mill Park.

Click on map to view in Google Maps.



Portsmouth Dog Park Rules:

- Pooper Scooper Law requires you to clean up after your dog
- For Safety Reasons Entry into the Fenced area is restricted by the city to persons Age 12 and older
- You are Responsible for your dog and their actions
- Dogs must have current licenses and vaccination tags
- Dogs must be spayed or neutered
- Spike and Choke collars must be removed
- Particular care should be taken to protect children from injury which might be caused by proximity to the dogs in the park

Portsmouth Police Department Animal Control Officer 427-1510 x441

Other Destinations:

Map of off-leash areas in Portsmouth

Seacoast Beaches - Note: Dogs are permitted only on the beaches of the Town of Rye. Special restrictions apply from Memorial day through mid-September.
Fort Foster

Users of this facility do so at their own risk. Neither the City of Rochester, Waste the Rochester Dog Owners Group (R-DOG) shall be liable for any injury or damage human, act of nature or accident incurred by use of this park.

- ❖ Owners/handlers must fill out a Park Utilization Form.
- ❖ Owners/handlers are liable for damage or injury inflicted by their dog(s).
- ❖ Owners/handlers must clean up after themselves and their pets (scoop the poop and
- ❖ Limit of two dogs per handler per visit.
- ❖ Handlers must be 16 years of age or older.
- ❖ Dogs must be under the control of and in view of the handler at all times.
- ❖ Leaving dogs unattended is prohibited. Animal control will be contacted.
- ❖ Dogs must be licensed and vaccinated.
- ❖ Puppies under four months of age are prohibited.
- ❖ No female dogs, while in heat, are allowed in the dog park.
- ❖ Aggressive dogs must be removed from the park immediately.
- ❖ Choke, prong, pinch, and spike collars must be removed inside park area.
- ❖ Dogs must be leashed prior to entering and before leaving the off-leash/play area of the park.
- ❖ Dog food, chews or bones are prohibited.
- ❖ Children under 12 must be accompanied and supervised by a parent or guardian.
- ❖ Glass containers and human food are not permitted within the fenced areas.
- ❖ Alcohol and drug use is strictly forbidden.

Failure to abide by these rules may result in a dog and/or handler being banned from the park be a considerate pet owner. Remember: This is a dog playground. Use of this park is a privilege, not a right.

Henry Law Park

We recommend a complete redesign of this park and construction alongside the completion of reconstructing Henry Law Avenue. The most used park in Dover and home to most special events, it is a true jewel in the city and really needs upgrading in the areas of shade trees, walkways, parking, lighting, bike racks, trash receptacles, dog waste systems, and benches. The opportunity for a water play feature should be researched and considered. If this park and its walkways are well lighted, it will see public use after dark by those shopping and eating downtown. Combined with what should be lighted walkways in Maglaras Park and Waterfront Park at Dover Landing, this will provide a great place for the many people desiring to exercise after work while enjoying the many views along the water Dover provides.

The playground in front of the indoor pool has seen vastly increased usage since the Cochecho Arts Festival moved its performances to the Rotary Gardens and Pavilion. The opening of the Children's Museum of New Hampshire in the Butterfield Building has attracted even more use of this playground. It should be upgraded with two more playground apparatus, shade trees and benches for adults, 4' high attractive fencing, simple landscaping, and removal of the non-functioning wading pool (usually filled with standing water) and rusted chain link fence. A possible collaboration between the City and the Museum can result in a unique playground tapping into the creativity represented by the Museum exhibits.

Joe Parks Riverwalk and Gardens

Dedicated in honor of Joe Parks in June 2008, this portion of the Cochecho Riverwalk is maintained by volunteers through the Adopt-a-spot program of Dover Main Street. Additional plantings as suggested in the concept plan will help stabilize the slope and provide a variety of Rhododendrons for visitors to view and smell while in bloom. Shorter lampposts (12-14' in height) would also enhance the experience for visitors to this space at night.

Long Hill Memorial Park

Park signage at the entrance on Long Hill Road is much needed. The substantial green space in the back of the park should be considered during any discussions for future additional athletic fields needed in the city as the space can accommodate multiple fields and additional parking with an extension to the entry road. With the increase in residential development over the past ten years in the north end of Dover, this park may have the potential to meet the needs of the people living in this area with its opportunity for expansion. Trees in this park need to be selectively pruned, removing dead limbs. Damaged sections of wood guardrail need to be replaced where needed.

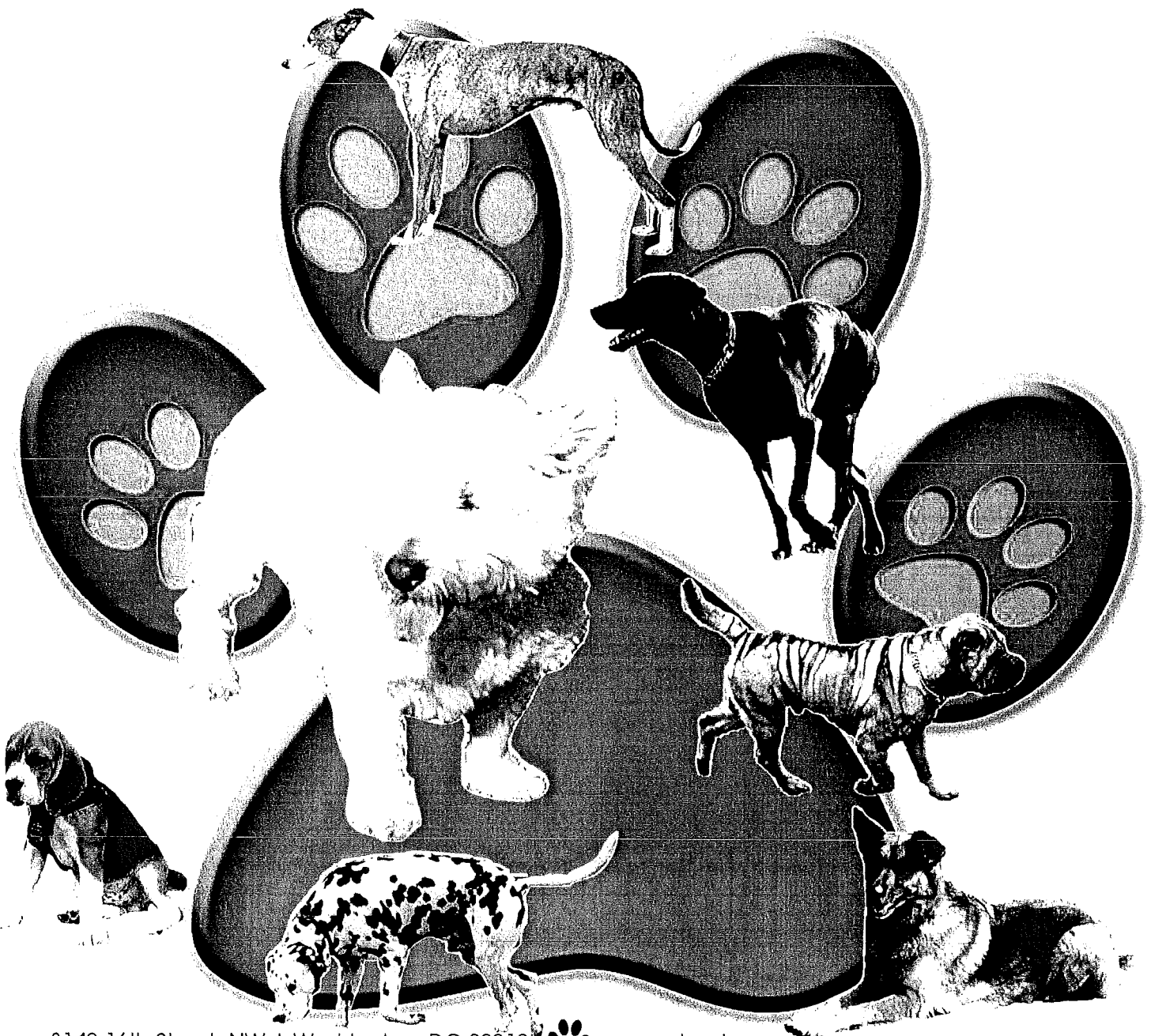
One of the responses received from the public was a desire to see a designated dog park where owners can bring their pets to roam free and get exercise. While creating completely new parks in the city is not recommended at this time, this park can be enhanced with minimal investment (fence installation in the area beyond the basketball court) to include an element not currently existing among Dover's parks. A dog park should consist of adequate fencing around the perimeter to contain dogs and provide them a safe place to run free with owner supervision. A dog waste bag system should be installed and clear signage designating it Dover's dog park.

Maglaras Park

In 2004, the City of Dover began a process of creating a master plan for this park. Completed in 2006, the consulting company, Kaestle Boos Associates, developed an overall improvement plan to guide potential renovations, expansion, and new construction in the park. There is

DOG PARKS

DESIGN STANDARDS AND PROCESS





Design Standards for DPR Dog Parks

About the Design Standards

The standard Department of Parks and Recreation (DPR) public dog park will consist of a safe surface for play, fencing, a water source, runoff mitigation, and visual screening. DPR will also provide each dog park with signage and a community bulletin board; information will be maintained by DPR and the sponsoring group.

These standards serve as basic guidelines to applicants regarding the design of a standard public dog park that DPR will fund, design, and build once an application for a dog park has been fully approved.

The design process for any proposed dog park will not begin until the dog park application has been approved by the DPR Director and a formal partnership agreement between DPR and the sponsoring group has been finalized.

Dog Park Surface

- The preferred surface shall be decomposed granite.
- The granite can be of varying size but shall not be greater than one quarter-inch (.25 inches) in size.
- The granite will be laid across the entire dog park site to a depth of at least six (6) inches.
- The decomposed granite will be laid based on manufacturer specifications.
- All necessary drainage systems will be installed prior to installation of the granite.

Alternative surfaces may be considered for certain areas and funding decisions for alternative surfaces will be made on a case-by-case basis.

Fencing

The purpose of fencing around the dog park is to protect both dogs and other park users.

- The standard fence shall be five (5) feet tall. The footings shall be buried to a depth of one foot and fence panels shall be buried to a depth of six (6) inches at all locations except at access points. DPR will determine the fencing type based on each park location and available funding.
- Each dog park will have two (2) access points. These gates and all entrances will be the same height as the fence surrounding them. One will provide public access to the dog park; this entrance will consist of a double gate. The first, or outer gate, will provide user access to a sixteen (16) square-foot area. This area will serve as a buffer between the dog park area and the rest of the park. Both gates to this entrance shall be lockable. Access will be controlled by either DPR or sponsoring group managers.
- The second dog park entrance shall be for maintenance purposes only and will be controlled by DPR. This entrance will be approximately sixteen (16) feet wide in order to allow full access to the site by maintenance vehicles.

Water Source

Each park will be equipped with a standard hose-bib.

Runoff Mitigation and Visual Screening

Each standard dog park will include planting beds along the outside of the fence to help screen the dog park from other users and to reduce runoff from the dog park area.

Historic Districts and other Zoning Districts

Many of the historic districts located throughout the District of Columbia have design guidelines for amenities in public space; it will be the responsibility of DPR to work with the Office of Planning's Historic Preservation Office for dog parks sited within historic districts.

Other zoning districts and regulations may impact the design and location of dog parks throughout the District, when this occurs it will be the responsibility of DPR to work with the appropriate office or agency.

Signage

Each dog park shall have permanent signs, stating the hours of operation, rules, and regulations for the dog park, and contact information for DPR.

Sponsoring Group Provided Amenities

Sponsoring groups interested in providing additional amenities to a proposed dog park shall submit a description of the proposed amenities in the proposal that accompanies their Dog Park Establishment Application. Applicants are advised that the inclusion of additional amenities will result in a more extensive design process. Please reference the "Design Process for DPR Dog Parks" section for additional information.

Design Process

The design process for both a standard dog park and a dog park with sponsoring group funded amenities is outlined in the "Design Process for DPR Dog Parks" section.

Design Process for DPR Dog Parks

About the Design Process

The design process for Department of Parks and Recreation (DPR) public dog parks will follow two distinct paths, depending on the dog park being proposed by the sponsoring group. The two paths outlined in the application form and design guidelines are:

- **Standard Dog Park**
- **User Defined Dog Park**

Each dog park will have the same standard features as outlined in the previous section, "Design Standards for DPR Dog Parks", however a User Defined Dog Park will allow a sponsoring group to add features or upgrade amenities within the proposed dog park.

Any additional features will be paid for and maintained by the sponsoring group.

In order to address the design of a User Defined Park, DPR has created a more thorough process that will allow the sponsoring group to be more involved, while maintaining DPR's role as project manager and ensuring that the park meets all the requirements of a new public dog park.

The design process for any proposed dog park will not begin until the dog park application has been approved by the DPR Director and a formal partnership agreement between DPR and the sponsoring group has been finalized.

Standard Dog Park Design Process

After a proposed dog park has been approved by the DPR Director and a formal partnership agreement between DPR and the sponsoring group has been finalized, DPR will acquire dog park design services. The designer will be provided with site specifications and DPR's "Dog Parks - Standard Design Guidelines" document.

Upon agreement of a concept design between DPR and the sponsoring group, both parties will meet with the community to present the concept design and obtain community support. Once community support has been obtained, the designer will complete construction documents. DPR will then procure construction services. Additional community meetings may be held as needed.

User Defined Dog Park Design Process

As part of the Dog Park Establishment application, the sponsoring group's proposal for a User Defined Dog Park will provide a complete description of the additional uses and/or amenities the sponsoring group would like to add to the standard dog park design.

The responsibilities of DPR and the sponsoring group in regards to the design, construction, and maintenance of sponsoring group proposed amenities shall be addressed in the formal partnership agreement. After a proposed dog park has been approved by the DPR Director and a formal partnership agreement between DPR and the sponsoring group has been finalized, DPR will acquire dog park design services. The designer will be provided with site specifications and DPR's dog park standards, and the additional amenities as proposed by the sponsoring group.

Upon agreement of a concept design between DPR and the sponsoring group, both parties will meet with the community to present the concept design and obtain community support. Once community support has been obtained, the designer will complete construction documents. DPR will then procure construction services.

During the design process, DPR will meet with the sponsor group and the design team a maximum of three times. There will also be two community meetings to discuss and review the proposed dog park.

Additional Information and Contact Information

Please direct requests for additional information and questions to:

Department of Parks and Recreation
Office of Planning and Design
Attention: Dog Parks
1480 Girard Street, NW
Washington, DC 20009-4612

Phone: (202) 673-7647
Email: DPR.dogparks@dc.gov

Additional information can also be obtained from the **Dog Parks** section of DPR's website at <http://dpr.dc.gov>