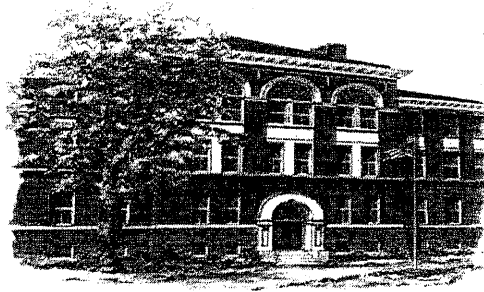


N. NEW BUSINESS
5.

JEAN BRIGGS BADGER
Superintendent

MICHAEL LIMANNI
Business Administrator



SCHOOL ADMINISTRATIVE UNIT #11
McCONNELL CENTER
61 LOCUST STREET SUITE 409
DOVER, NEW HAMPSHIRE 03820-4132
TEL (603) 516-6800
FAX (603) 516-6809

THE DOVER SCHOOL DISTRICT

MEMORANDUM

TO: Ms. Jean Briggs Badger, Superintendent of Schools
Members Dover School Board

FROM: Michael Limanni, Business Administrator

DATE: October 1, 2012

RE: Student Tuition Rates for FY: 2012-2013

For your approval, listed below are the final tuition rates for school districts in New Hampshire and Maine who send their students through the Dover School System. The rates exclude Barrington and Nottingham School Districts because each District has their own separate contract. An attachment is also included that demonstrates how these rates were calculated.

Please let me know if you have any questions concerning these fees.

	Elementary	Middle	High
*Per Pupil Cost-6/30/12 DOE-25	\$9,629.77	\$9,031.26	\$11,149.61
Other NH and Maine Districts	\$15,901.56	\$13,498.06	\$14,182.30
*Vocational Tuition			\$11,149.61
Other NH and Maine Districts Per Diem Rate	\$89.84	\$76.26	\$80.13

***Pending final approval of the Department of Education Form DOE-25**

Dover School District Mission Statement

Strengthening our community by educating every child, every day!

- Over -

"OTHER" SCHOOL DISTRICT TUITION CALCULATIONS FOR THE 2012-2013 SCHOOL YEAR (REGULAR EDUCATION)

	Elementary	Middle	High School
RATE ESTABLISHED FOR FY: 2011-2012:	15,121.72 \$	12,792.07 \$	13,398.91
PLUS NET CHANGE IN APPROPRIATIONS FROM FY2012 to FY2013 = 1.09%	164.83 \$	139.43 \$	146.05
PLUS AMOUNT FOR RENTAL:	615.01 \$	566.56 \$	637.34
TUITION RATE FOR ALL OTHER SCHOOL DISTRICTS	15,901.56 \$	13,498.06 \$	14,182.30

Per Diem Rate \$ 89.84 \$ 76.26 \$ 80.13

Increase over PY: 5.16% 5.52% 5.85%

D