

Dover Special Education

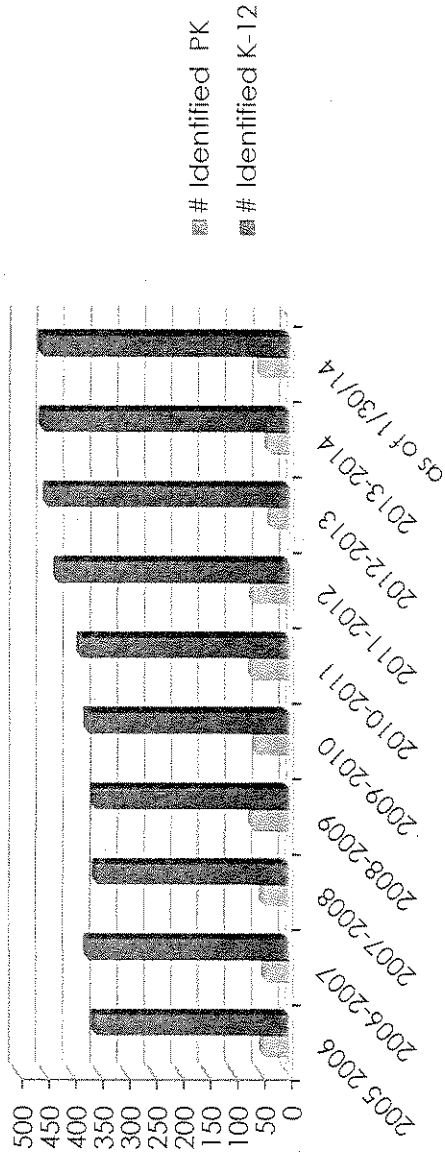
February 2014



Agenda

- Who we serve...
- Where students are served...
- How services are delivered...
- Challenges/Considerations...

Enrollment Trends



Year	2005-2006	2006-2007	2007-2008	2008-2009	2009-2010	2010-2011	2011-2012	2012-2013	2013-2014	as of 1/30/14
# Identified PK	47	44	48	68	62	69	67	35	39	54
# Identified K-12	358	373	356	361	374	386	431	449	456	459
Total	405	417	404	429	436	455	498	484	495	513
Increase over prior year		15	-17	5	13	12	45	18	7	18

Dover Enrolled, does not include OOD, Barrington, Nottingham, Charter or Private School Students

Identification Category by Level

Disability	Preschool	Elementary	Middle School	High School	ALT School
Autism	9	16	22	16	
Developmental Delay	24	33			
Emotional Disturbance		9	23	19	9
Hearing Impairments	1	2	1		
Intellectual Disability		2	5	10	
Mental Retardation				1	
Multiple Disabilities	1	1	3	3	
Orthopedic Impairment			1		
Other Health Impairments	4	34	32	37	2
Specific Learning Disability		29	69	53	1
Speech-Language Impairments	13	52	25	9	1
Traumatic Brain Injury			1	1	
Visual Impairments	2	2			
Total Students Identified	54	180	181	150	13
In Process	7	12	2	1	0
Total Students listed in NHEIS	61	192	183	151	13

** As of 2/7/14 does not include Barrington, Nottingham, or Alt OOD students**

Current Staffing Ratios

School	# Identified Students	# Case Managers	# of CM's for Programs	Existing Ratio
DHS Dover	139	8	1	25.625
Barrington	49			
Nottingham	17			
Alternative	13	1		
Total	218			
DMS	167	7	3	23.85714286
GES	39	2	1	19.5
HSS	53	2		26.5
WPS	83	3		27.66666667
PS	60	3		20
Private	26			
Charter	2			
OOD	20	1		22
Total Identified	668	27	5	
Total to service (remove OOD and Private Schools)	622			

Supports by School

School	Special Ed Teacher	Program Managers	Special Learning Path	SLA	Magisterial with PWA	Psychologist	Behavioral Analyst	OT	PT	BCBA	ABA	TOV	ICDMH	# Identified	Special Education
Preschool	3	0	0	0	35	0.25	0	0	0.15	0	0	0.01	0.05	7	0
Seaton School	2	1	1	0	27	0.25	1	0.5	0.17	0	0	0	0.01	35	0
Union Street School	2	0	1	0	33	0.25	1	0.5	0.07	0	0	0.003	0	56	0
Woodlawn Park School	3	0	0	0	35	0.25	1	0.5	0	0.2	0	0.22	0.12	3	0
Wester Middle School	2	0	1	0	25	0	0	0.3	0.1	0.2	0	0	0	138	0
Wester Math School	10	0	0	0	25	0	1	0.1	0.05	0	0	0.02	0	22	0
Wester Montebello School	1	0	0	0	0	0	0	0	0	0	0	0	0	1	0
	20	0	5	0	283	0	4	2.4	0.47	0.4	0	0.273	0.27	645	100

Wester Montebello School
 2000
 2000



Programming Available at Each School...

- Direct Instruction
- Pull out instruction/intervention
- Occupational Therapy
- Physical Therapy
- Speech/Language Therapy



Current Initiatives

- Inclusion of students with multiple exceptionalities in neighborhood schools
- BCBA/ABA – WPS/DMS
- ASPIRE –DHS
- Unified Science-DHS
- Alignment of curriculum standards with IEP goals – District Wide



Dover Alternative

- Dover Alternative currently has the capacity to serve up to 24 students.
- There are 14 DHS students and 4 tuition students enrolled.
- Tuition for out of district students is currently set at \$38,500.00
- Tuition accounts for \$205,335.00 of the budget plan and assumes 6 full-time tuition students per year.
- The Dover School District supports the Alternative Program with a fund transfer of \$392,000.00 per year or currently \$28,000 per Dover Student (14).
- The cost of sending the current students to appropriate placements if the Alt were not available is in the range of \$724,774 assuming some students attended the same placement and transportation costs could be shared.
- This results in a \$332,774 reduction in potential out of district costs to serve these 14 students.

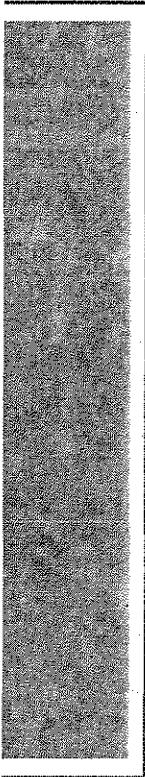


Dover Alternative Cont.

- The Alternative School is staffed to support a maximum staff/student ratio of 4:1.
- 4 Teachers (Math, English/dual cert in SPED, SS, Science)
- Director
- Counselor
- The program also includes one paraprofessional and a part time administrative assistant

Out of District Placement by Category of Disability

Disability	Elementary ODD	Middle School ODD	High School ODD
Autism			2
Developmental Delay	2		
Emotional Disturbance	3	5	3
Hearing Impairments			
Intellectual Disability			
Mental Retardation			
Multiple Disabilities		1	
Orthopedic Impairment			
Other Health Impairments	1	1	
Specific Learning Disability			1
Speech-Language Impairments			
Traumatic Brain Injury			
Visual Impairments			



How Special Education is Funded...

- FY 14 Local Budget
- FY 14 IDEA Grant
- FY14 Proportional Share to Private Schools
- Medicaid to Schools Reimbursement
- Catastrophic Aid

Challenges

- Alt School Funding and decreasing enrollments
- Decreasing resources at Elementary and Middle School levels are increasing need for OOD placements (especially in categories of EH and OHI)
- Increasing enrollment has exponentially added to case loads across the district
- Increased paperwork and documentation requirements
- Mental health needs of students often not able to be addressed in the community quickly making the issues manifest in school.

Staffing Recommendations

- Increase existing special education teacher/case manager positions to support a 20:1 ratio across the district
- EH/Behavior teacher at elementary school level
- EH Counselor and para at Middle School Level
- Consider contracting with local agencies to provide mental health supports in the school (1 day per week for each 500 students)