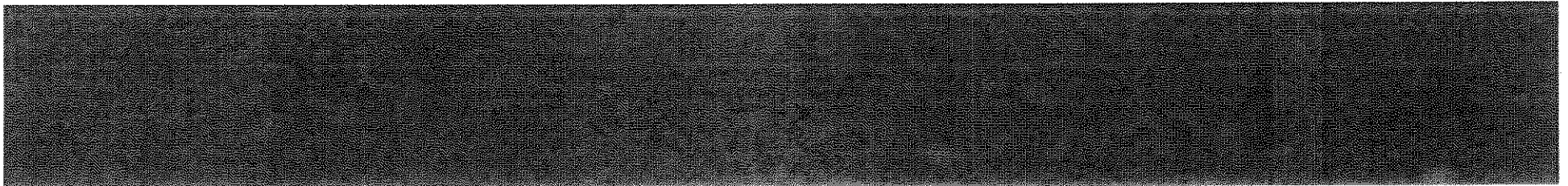
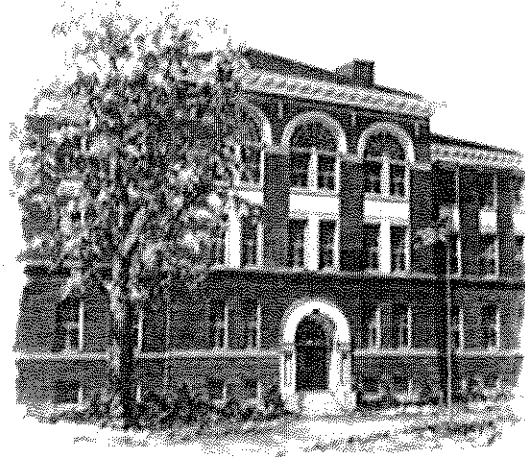


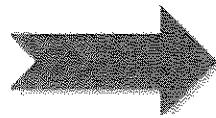
**Dover, NH School District
Smarter Balanced Assessment
March 9, 2015**



A Balanced Assessment System

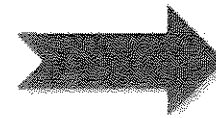
How do we get from here...

Common Core State Standards specify K-12 expectations for college and career readiness



Summative assessments
Benchmarked to college and career readiness

Teachers and schools have information and tools they need to improve teaching and learning



...to here?

All students leave high school college and career ready

Teacher resources for **formative assessment practices** to improve instruction

Interim assessments
Flexible, open, used for actionable feedback

What Do We Learn About Individual Students through Smarter Balanced?

Measures individual student's:

- Proficiency
- Growth
- “on track”-ness to college- and career-readiness
- Readiness, at end of high school, for credit-bearing entry level postsecondary courses

Testing Window

Window can begin:

- 66% instructional days: Grades 3-8
- 80% instructional days: Grade 11

Suggestions for NH:

- **Grades 3-4, weeks 1-3**
- **Grades 5-6, weeks 4-6**
- **Grades 7-8 & 11, weeks 7-9**
- **Makeup, weeks 10-12**

Table 2: Estimated testing times for Smarter Balanced Summative Assessments

Test Type	Grades	CAT	Perf Task Only	Total	In-Class Activity	Total
English Language Arts/Literacy	3-5	1:30	2:00	3:30	:30	4:00
	6-8	1:30	2:00	3:30	:30	4:00
	11	2:00	2:00	4:00	:30	4:30
Mathematics	3-5	1:30	1:00	2:30	:30	3:00
	6-8	2:00	1:00	3:00	:30	3:30
	11	2:00	1:30	3:30	:30	4:00
COMBINED	3-5	3:00	3:00	6:00	1:00	7:00
	6-8	3:30	3:00	6:30	1:00	7:30
	11	4:00	3:30	7:30	1:00	8:30

Times are estimates of test length for most students. Smarter Balanced assessments are designed as untimed tests; some students may need and should be afforded more time than shown in this table.

Q: What is the Smarter Balanced Assessment System?

Computer Adaptive Assessment

BEGINNING
OF YEAR

END
OF YEAR

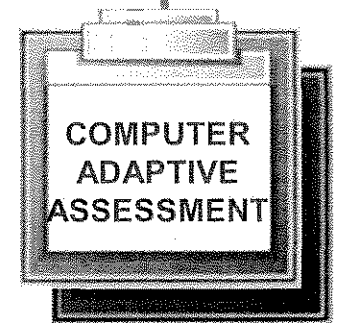
Multiple item types

(Constructed response and technology enhanced)

- Selected response
- Drag and drop
- Matching
- Fill-in tables
- Short text
- Graphing

Adaptive delivery

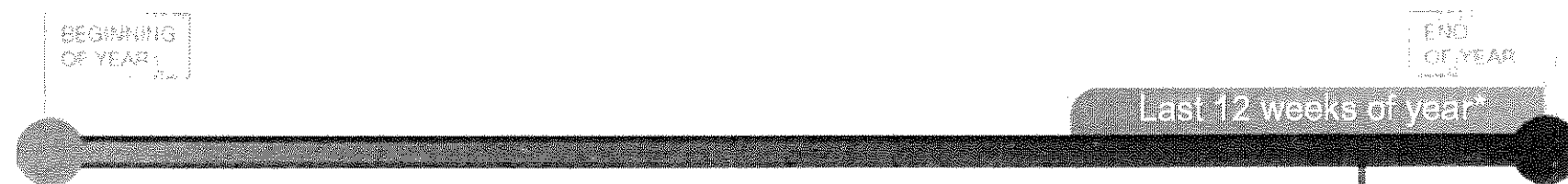
Can span up to two grade levels up or down to gain accuracy and clearer profile of strengths and needs.



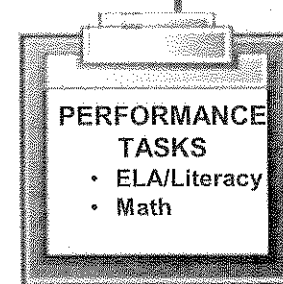
Re-take option

Q: What is the Smarter Balanced Assessment System?

Performance Tasks



- **One ELA task & one math task per year**
- **Helps assess beyond basic knowledge and skills**
- **Combination of machine and teacher/human scoring**
- **Results by end of school year**



Universal Tools: Available to ALL students

Embedded

- Breaks
- Calculator
- Digital Notepad
- English Dictionary
- English Glossary
- English Thesaurus
- Expanded Passages
- Global Notes
- Highlighter
- Keyboard Navigation
- Mark for Review
- Math Tools
- Spell-Check
- Strikethrough
- Writing Tools
- Zoom

Non-Embedded

- Breaks
- English Dictionary
- Scratch Paper
- Thesaurus

Designated Supports: Available to ANY student with a need determined by educators

Embedded

- *Audio Translation Glossaries
- Color Contrast
- Masking
- Text-to-Speech
- *Translations-Math (Glossary)
- *Translations-Math (Stacked)*
- Turn off any universal accessibility tool

Non-Embedded

- *Bilingual Dictionary
- Color Contrast
- Color Overlay
- Magnification
- Noise Buffering
- ~Read Aloud
- Separate Setting
- *Translation-Math(Glossary)
- *Translation Test Direction

Accommodations: Available to students with an IEP or 504 Plan

Embedded

- American Sign Language (Video)
- Braille
- Closed Captioning
- Streamline View
- Text-to-Speech (ELA-reading Passages) grades 6-11

Non-Embedded

- Abacus
- Alternate Response Options
- Calculator- grades 6-11
- Multiplication Table-grades 4-11
- # Print on Demand
- ~ # Read Aloud- (ELA-reading Passages) grades 6-11
- ~ # Scribe
- Speech-to-Text

~ Requires Trained Educator

*EL-ONLY

Requires Petition for Approval of Special Documented Accommodations

Smarter Balanced Assessment

Student's Name _____ Grade _____ School _____

Teacher _____ Case Manager _____ Date _____

IEP YES NO (please circle)

504 YES NO (please circle)

English Language Learner
YES NO (please circle)

Team Recommendation (Team Members) _____

Designated Supports: (Please check)

Embedded		Non-Embedded	
<input type="checkbox"/>	Color Contrast	<input type="checkbox"/>	Color Contrast
<input type="checkbox"/>	Masking	<input type="checkbox"/>	Color Overlay
<input type="checkbox"/>	Text-to-Speech	<input type="checkbox"/>	Magnification
<input type="checkbox"/>	Turn off any universal accessibility tool	<input type="checkbox"/>	Noise Buffering
<input type="checkbox"/>	Translations – Math (Glossary) (ELL only)	<input type="checkbox"/>	Read Aloud (Requires Trained Educator)
<input type="checkbox"/>	Translations – Math (Stacked) (ELL only)	<input type="checkbox"/>	Translation – Math (Glossary) (ELL only)
<input type="checkbox"/>	Audio Translation Glossaries (ELL only)	<input type="checkbox"/>	Translation Test Direction (ELL only)
<input type="checkbox"/>		<input type="checkbox"/>	Bilingual Dictionary (ELL Only)

Accommodations: (Available to students with an IEP or 504 Plan)

Embedded		Non-Embedded	
<input type="checkbox"/>	Closed Captioning	<input type="checkbox"/>	Abacus
<input type="checkbox"/>	Streamline View	<input type="checkbox"/>	Alternate Response Options
<input type="checkbox"/>	Text-to-Speech (ELA Reading Passages) Grades 6-11	<input type="checkbox"/>	Calculator – Grades 6-11
<input type="checkbox"/>	American Sign Language (Video)	<input type="checkbox"/>	Print on Demand - Requires Petition for Approval of Special Documented Accommodations
<input type="checkbox"/>	Braille	<input type="checkbox"/>	Scribe – Requires Trained Educator – Requires Petition for Approval of Special Documented Accommodations
<input type="checkbox"/>		<input type="checkbox"/>	Speech-to-Text
<input type="checkbox"/>		<input type="checkbox"/>	Multiplication Tables – Grades 4-11
<input type="checkbox"/>		<input type="checkbox"/>	Read Aloud Grades 6-11 – Requires Trained Educator – Requires Petition for Approval of Special Documented Accommodations

SMARTER BALANCED DESIGNATED SUPPORTS

Embedded Designated Supports

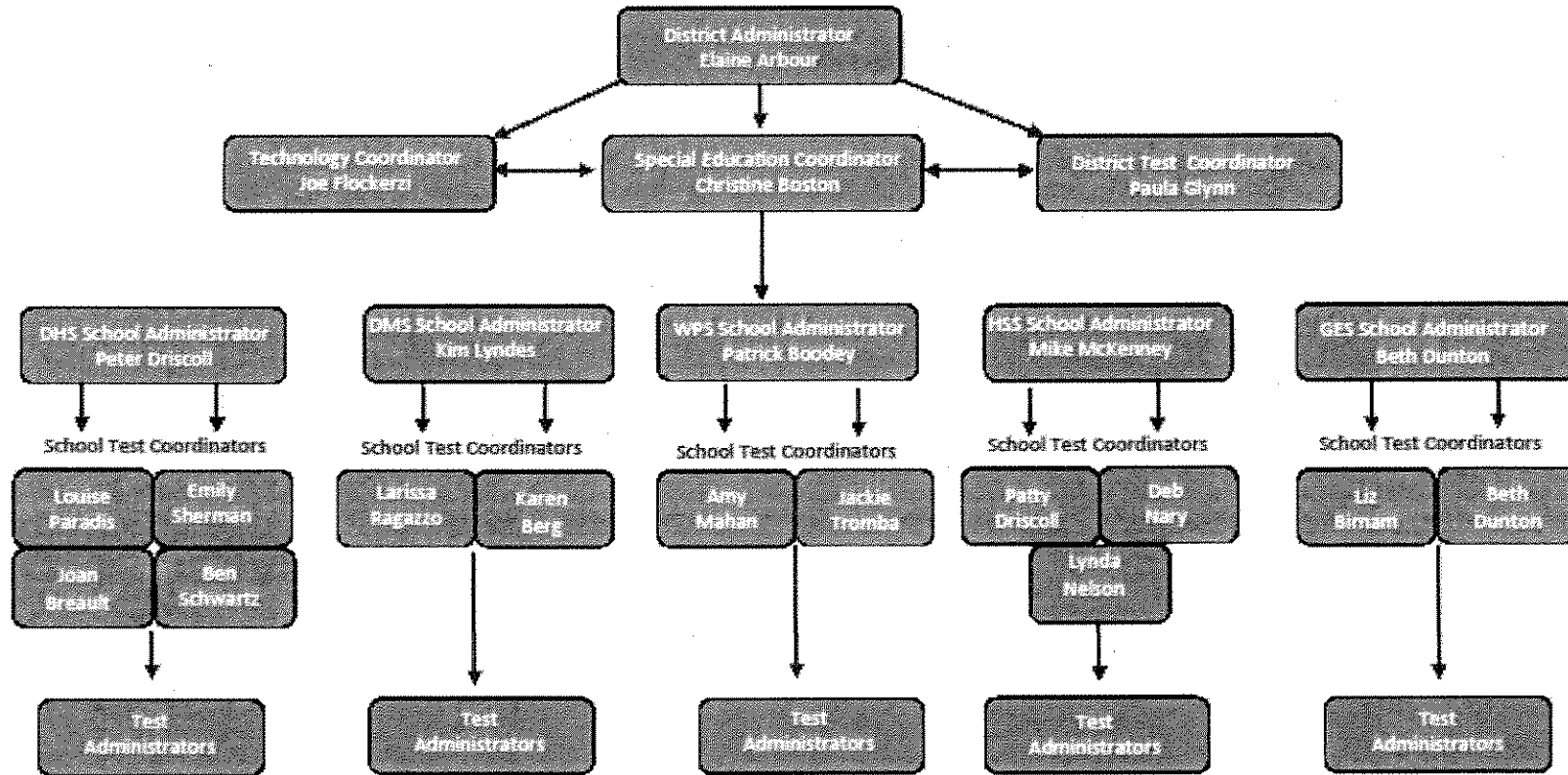
Designated Support	Description
Color contrast	Enable students to adjust screen background or font color, based on student needs or preferences. This may include reversing the colors for the entire interface or choosing the color of font and background.
Masking	Masking involves blocking off content that is not of immediate need or that may be distracting to the student. Students are able to focus their attention on a specific part of a test item by masking.
Text-to-speech (for math stimuli items and ELA items, not for reading passages) ² (See Embedded Accommodations for ELA reading passages)	Text is read aloud to the student via embedded text-to-speech technology. The student is able to control the speed as well as raise or lower the volume of the voice via a volume control.
Translated test directions (for math items)	Translation of test directions is a language support available prior to beginning the actual test items. Students can see test directions in another language. As an embedded designated support, translated test directions are automatically a part of the stacked translation designated support.
Translations (glossaries) (for math items)	Translated glossaries are a language support. The translated glossaries are provided for selected construct-irrelevant terms for math. Translations for these terms appear on the computer screen when students click on them. Students with the language glossary setting enabled can view the translated glossary. Students can also select the audio icon next to the glossary term and listen to the audio recording of the glossary.
Translations (stacked) (for math items)	Stacked translations are a language support. Stacked translations are available for some students; stacked translations provide the full translation of each test item above the original item in English.
Turn off any universal tools	Disabling any universal tools that might be distracting or that students do not need to use, or are unable to use.

Non-Embedded Designated Supports

Designated Support	Description
Bilingual dictionary (for ELA-performance task full writes)	A bilingual/dual language word-to-word dictionary is a language support. A bilingual/dual language word-to-word dictionary can be provided for the full write portion of an ELA performance task. A full write is the second part of a performance task.
Color contrast	Test content of online items may be printed with different colors.
Color overlays	Color transparencies are placed over a paper-based assessment.
Magnification	The size of specific areas of the screen (e.g., text, formulas, tables, graphics, and navigation buttons) may be adjusted by the student with an assistive technology device. Magnification allows increasing the size to a level not provided for by the Zoom universal tool.
Noise Buffers	Ear mufflers, white noise, and/or other equipment used to block external sounds.
Read aloud (for math items and ELA items, not for reading passages) (See Non-embedded Accommodations for ELA reading passages)	Text is read aloud to the student by a trained and qualified human reader who follows the administration guidelines provided in the <i>Smarter Balanced Test Administration Manual</i> . All or portions of the content may be read aloud.
Scribe (for ELA non-writing items and math items) ³ (See Accommodations for Writing)	Students dictate their responses to a human who records verbatim what they dictate. The scribe must be trained and qualified, and must follow the administration guidelines provided in the <i>Smarter Balanced Test Administration Manual</i> .
Separate setting	Test location is altered so that the student is tested in a setting different from that made available for most students.
Translated test directions	PDF of directions translated in each of the languages currently supported. Bilingual adult can read to student.
Translations (glossaries) (for math items)	Translated glossaries are a language support. Translated glossaries are provided for selected construct-irrelevant terms for math. Glossary terms are listed by item and include the English term and its translated equivalent.

SMARTER BALANCED ASSESSMENT

DOVER



DA—District Administrator
 DTC—District Test Coordinator
 SPED—Special Education Coordinator
 STC—School Test Coordinator
 TA—Test Administrator
 TC—Technology Coordinator

TIP OF THE WEEK: NOVEMBER 10, 2014

JUST IN FROM THE NHDOE!!!

The Smarter Balanced grade span testing windows are as follows:

- **Grades 3 & 4 during weeks 1-6**
- **Grades 5 & 6 during weeks 3-8**
- **Grades 7, 8, & 11 during weeks 5-12**

Makeup assessments will occur during the appropriate window. Each school district will determine, based on their own calendar, when they can begin testing and their testing schedule.

It is important, however, that grades 3-8 have completed at least 66% of instructional days prior to beginning testing and Grade 11 must have completed 80%

SMARTER BALANCED TIP OF THE WEEKS: Feb. 9th, 2015

Smarter Balanced Scheduling Suggestion:

- **English Language Arts/Literacy**
 - **Day 1: Non-performance Task Session 1**
 - **Day 2: Non performance Task Session 2**
 - **Day 3: Classroom Activity**
 - **Day 4: Performance Task Part 1**
 - **Day 5: Performance Task Part 2**

- **Math**
 - **Day 1: Non-Performance Task Session 1**
 - **Day 2: Non-Performance Task Session 2**
 - **Day 3: Classroom Activity**
 - **Day 4: Performance Task**

***Classroom and Performance Task(s) should be completed in the same week if possible.**